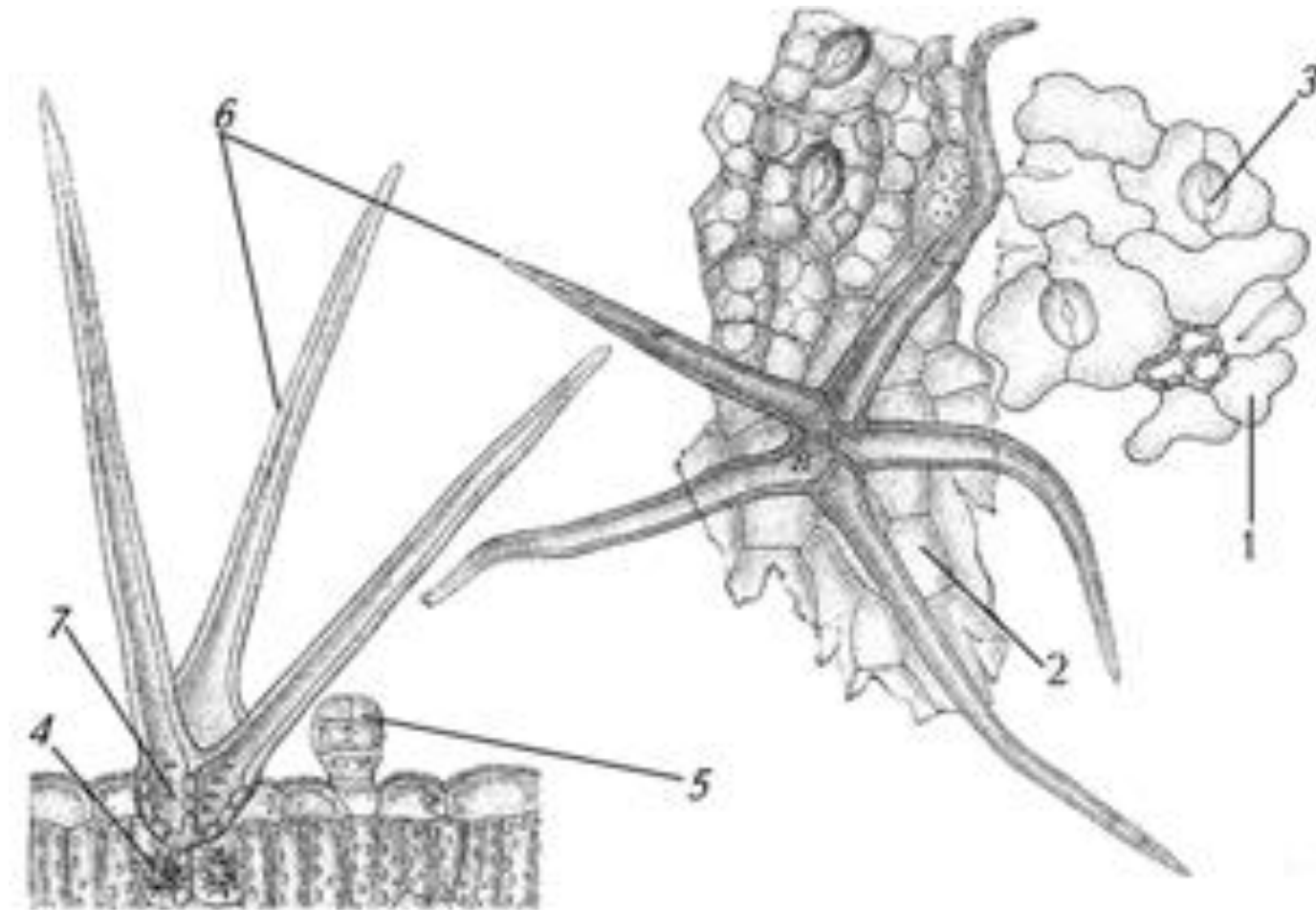


Marshmallow herb - *Althaeae herba*
Marshmallow – *Althaea officinalis* L.,
Fam. *Malvaceae*.



Macroscopical description:

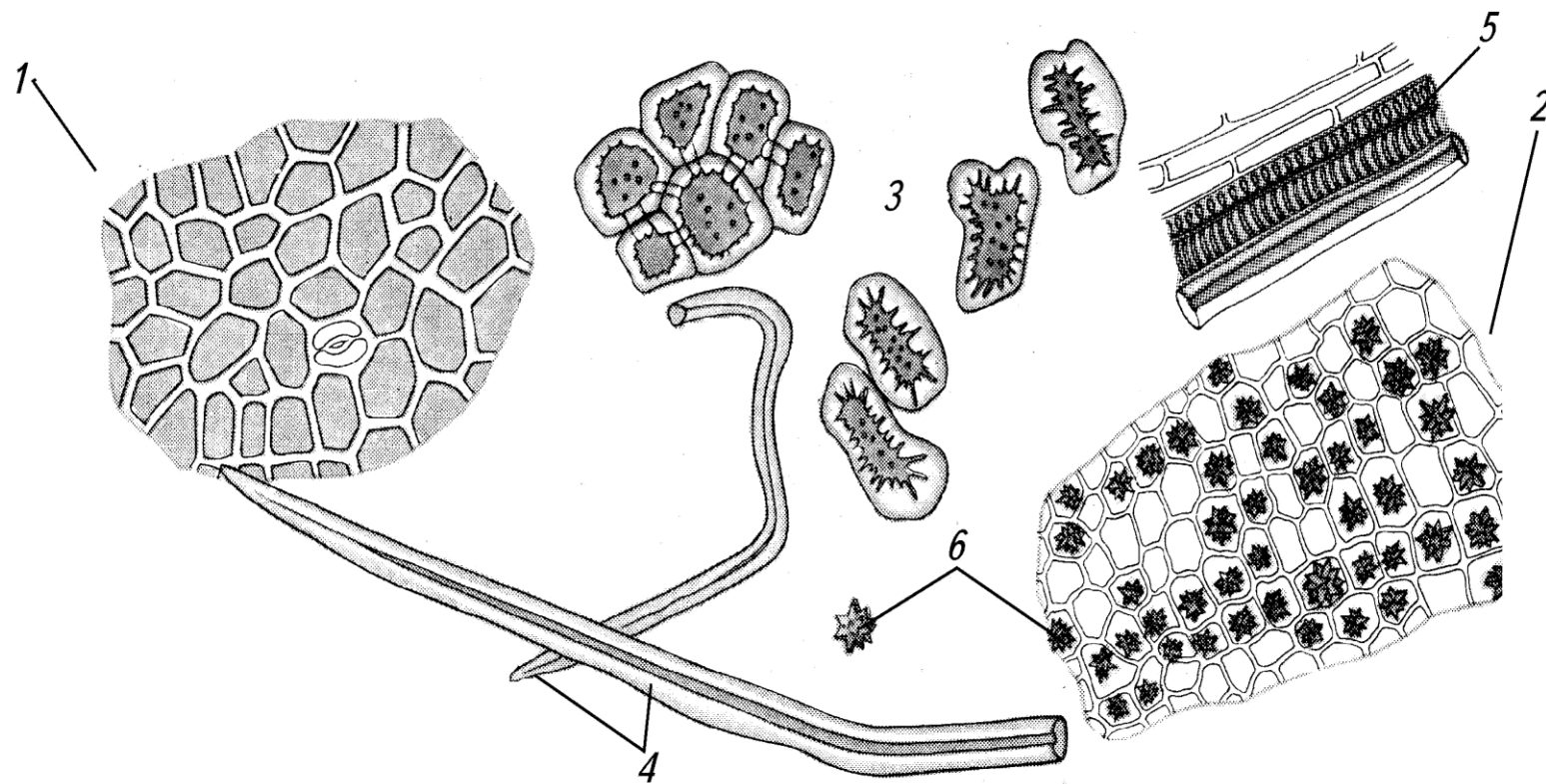
- 1 – upper epidermal cells;
- 2 – lower epidermal cells;
- 3 – druses;
- 4 – druses;
- 5 – simple multicellular hairs;
- 6 – star-shaped hairs;
- 7 – basis of a hair.

Rose hip and seed – *Rosae fructus*

Cinnamon rose – *Rosa cinnamomea*

Dog rose – *Rosa canina*

Fam. *Rosaceae*



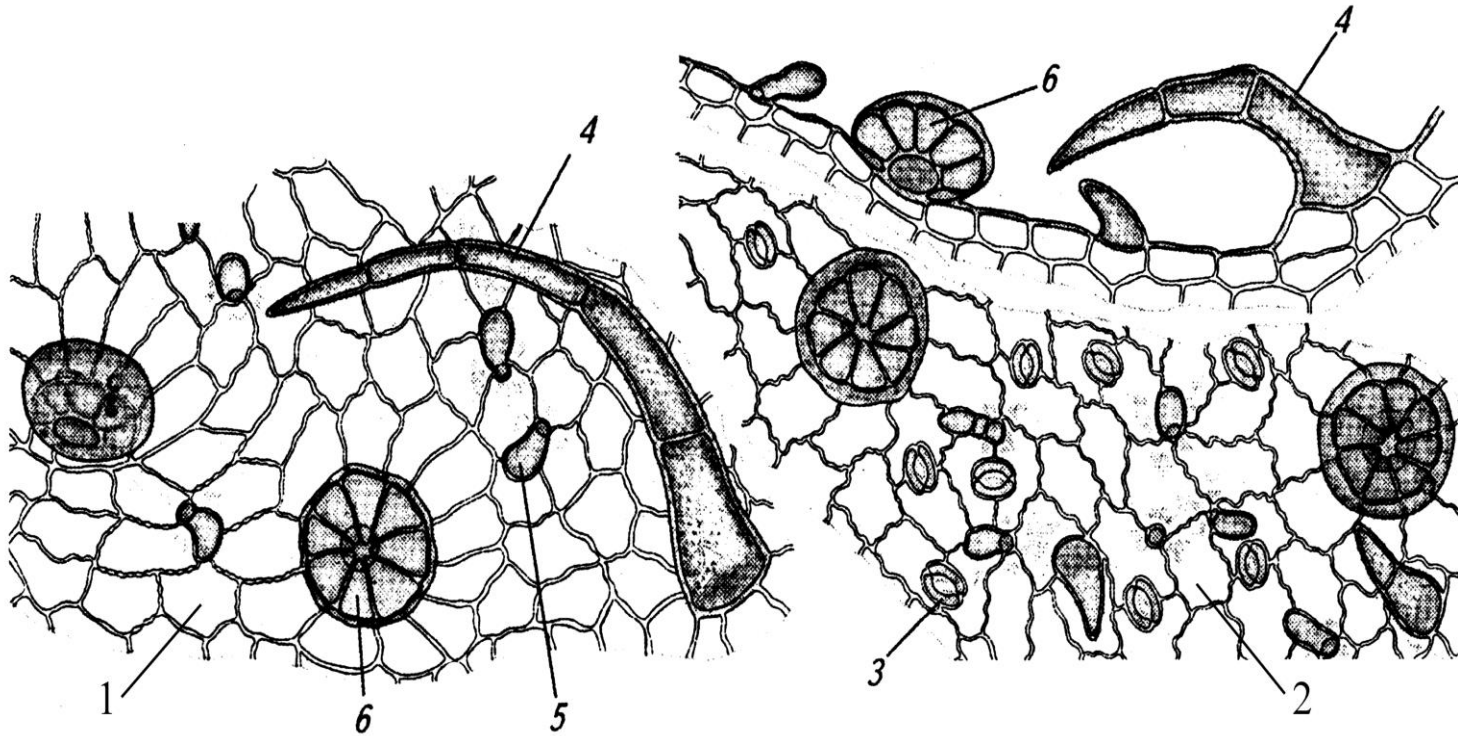
Macroscopical description:

- 1 – hypanthium epiderm;
- 2 – hypanthium flesh with cells bearing chromoplasts and druses;
- 3 – stony cells;
- 4 – large simple hairs;
- 5 – fragments of vessels;
- 6 – druses.

Peppermint leaf - *Menthae piperitae folia*

Peppermint - *Mentha piperita*

Fam. *Lamiaceae*



Macroscopical description:

1 – upper epiderm;

2 – lower epiderm;

3 – stomata;

4 – simple hairs;

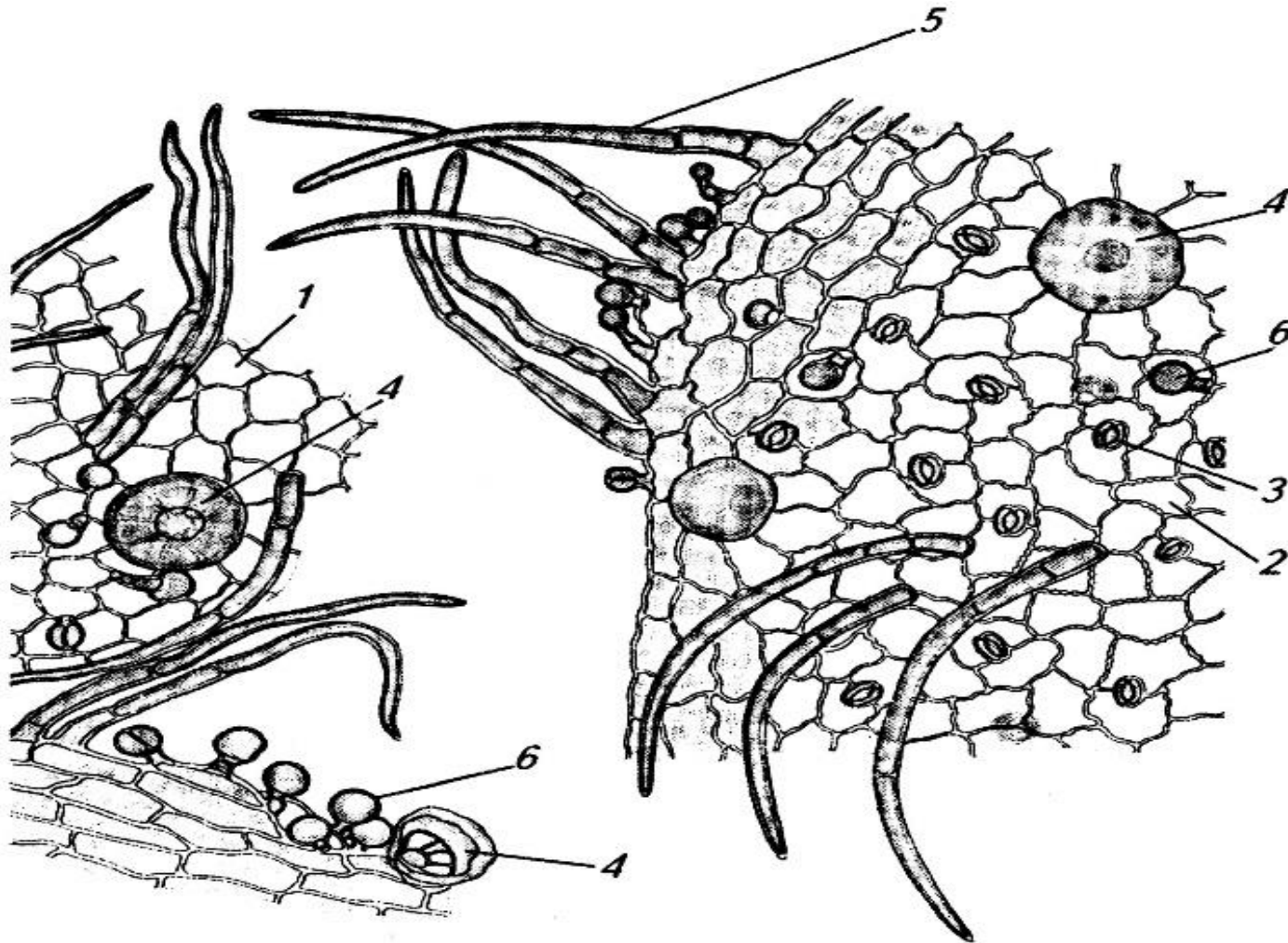
5 – trichome;

6 – essential oil gland.

Sage leaf – *Salviae folia*

Sage - *Salvia officinalis*

Fam. *Lamiaceae*



Macroscopical description:

1 – upper epiderm;

2 – lower epiderm;

3 – stomata;

4 – essential oil gland;

5 – simple multicellular
hairs;

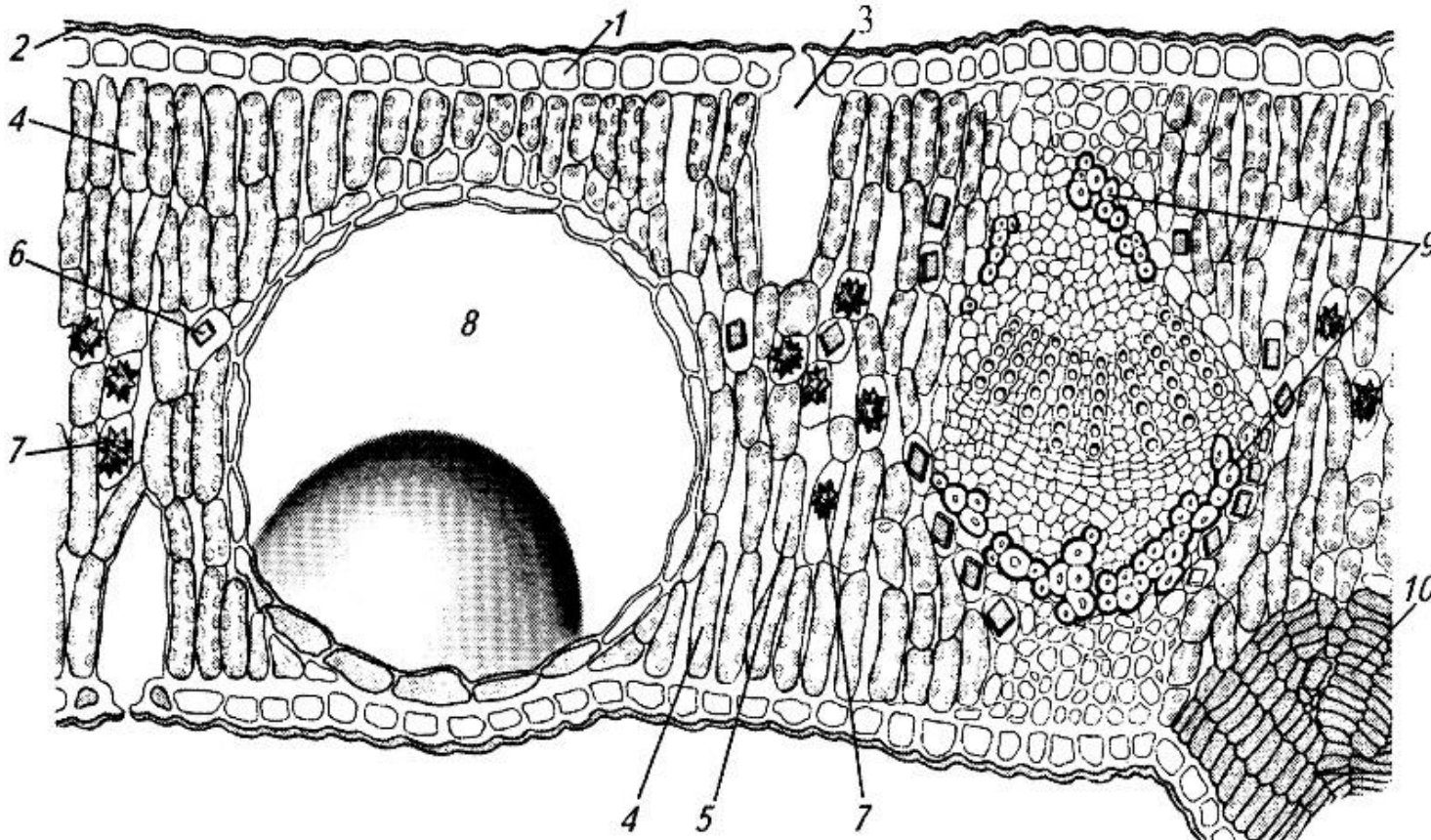
6 – trichome.

Gum-tree leaf - *Eucalypti folia*

Gum - tree, Blue gum,

Fever tree - *Eucalyptus globules*

Fam. *Myrtaceae*



Macroscopical description:

1 – epidermal cells;

2 – cuticle;

3 – stomata;

4 – palisade mesophyll;

5 – spongeous tissue;

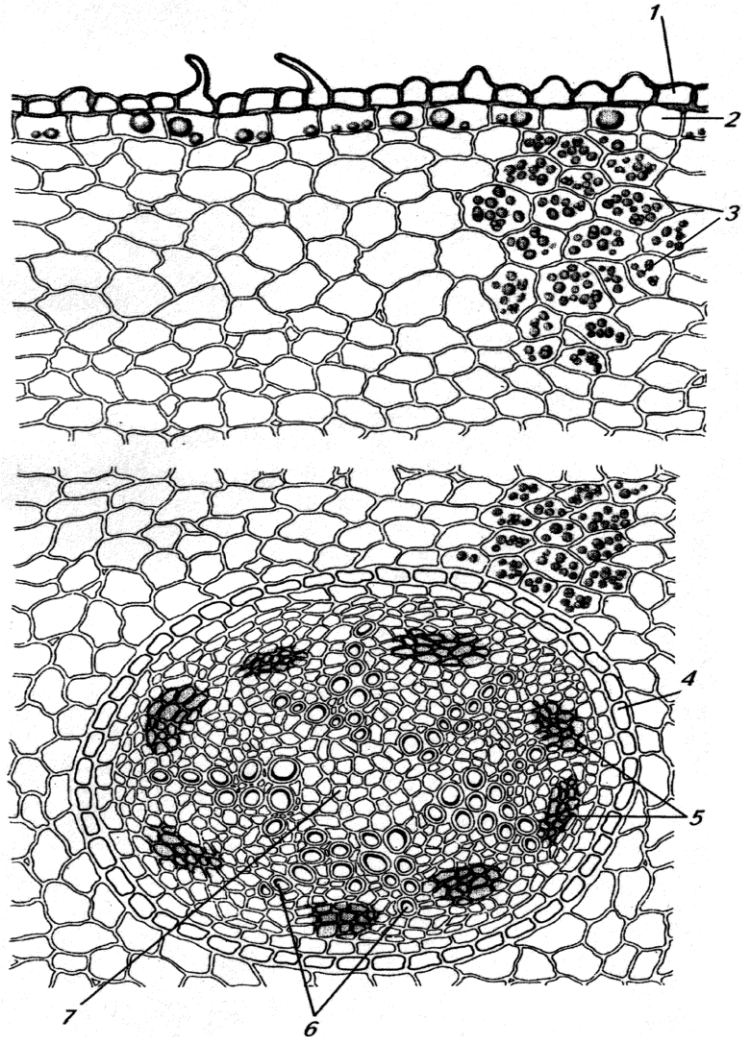
6 – calcium oxalate crystals;

7 – druses;

8 – schizogenous receptacle with essential oil;

9 – open collateral conductive bundle; 10 – cork spot.

Rhizoma cum radicibus Valerianae – *Valerianae Rhizomata cum radicibus*
Valerian - *Valeriana officinalis*
Fam. *Valerianaceae*



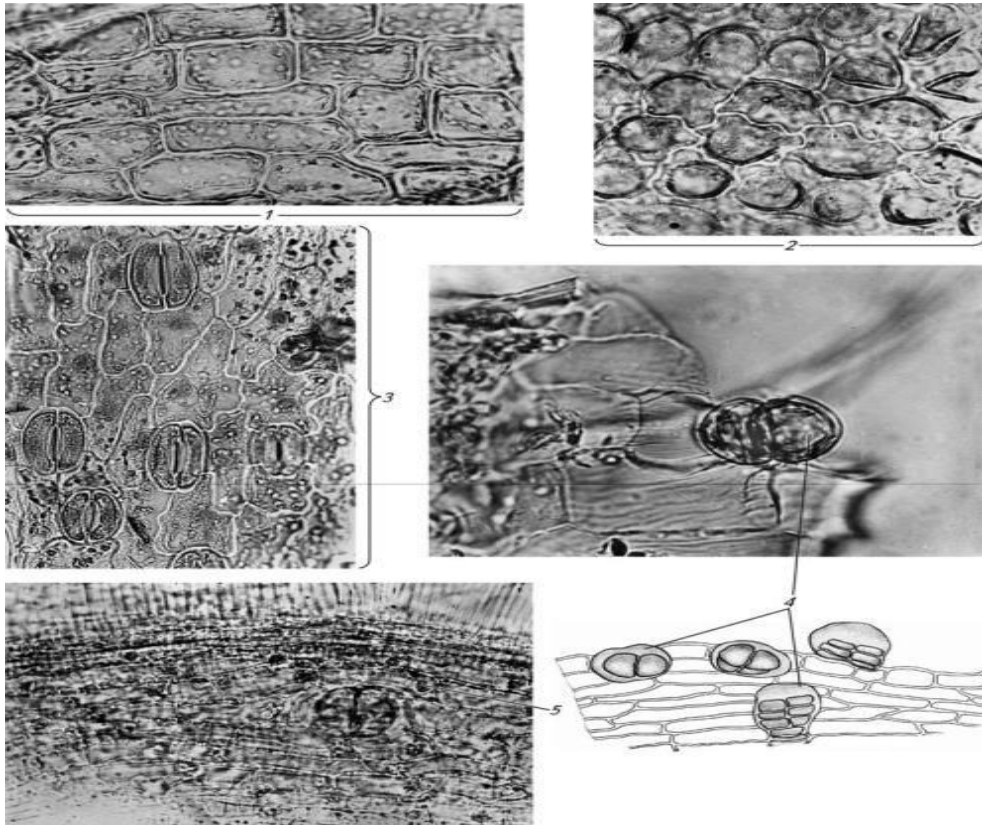
Macroscopical description:

- 1 – epiderm;
- 2 – hypodermal cells with essential oil;
- 3 – parenchymal cells with starch grains;
- 4 – endoderm;
- 5 – phloem;
- 6 – xylem vessels;
- 7 – core parenchyma.

German chamomile flowerhead - *Chamomillae Flores*

German chamomile - *Chamomilla recutita*

Fam. *Asteraceae*



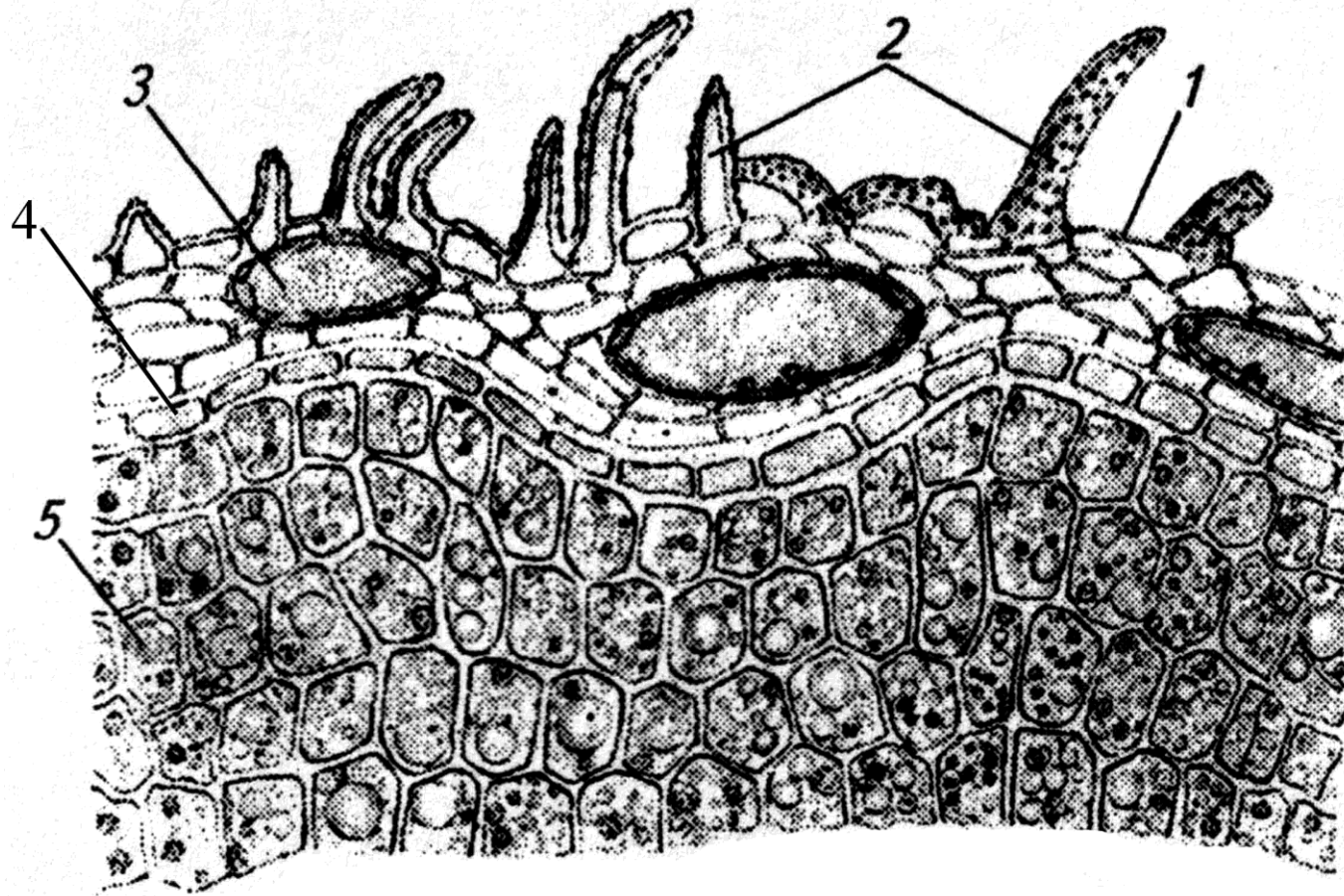
Macroscopical description:

- 1 - epidermal cells with slightly sinuous walls;
- 2 - epidermal cells upper side of flower;
- 3 - epidermis with thickened walls;
- 4 - essential oil glands from 6 - 8 cells arranged in 2 rows and 4 tiers;
- 5 - small druses of calcium oxalate

Anisum (anise) fruit - *Anisi vulgaris Fruclus*

Aniseed, sweet cumin - *Anisum vulgare*

Fam. *Apiaceae*



Macroscopical description:

1 – exocarpium;

2 – epidermal trichomes;

3 – essential oil tubes (passages);

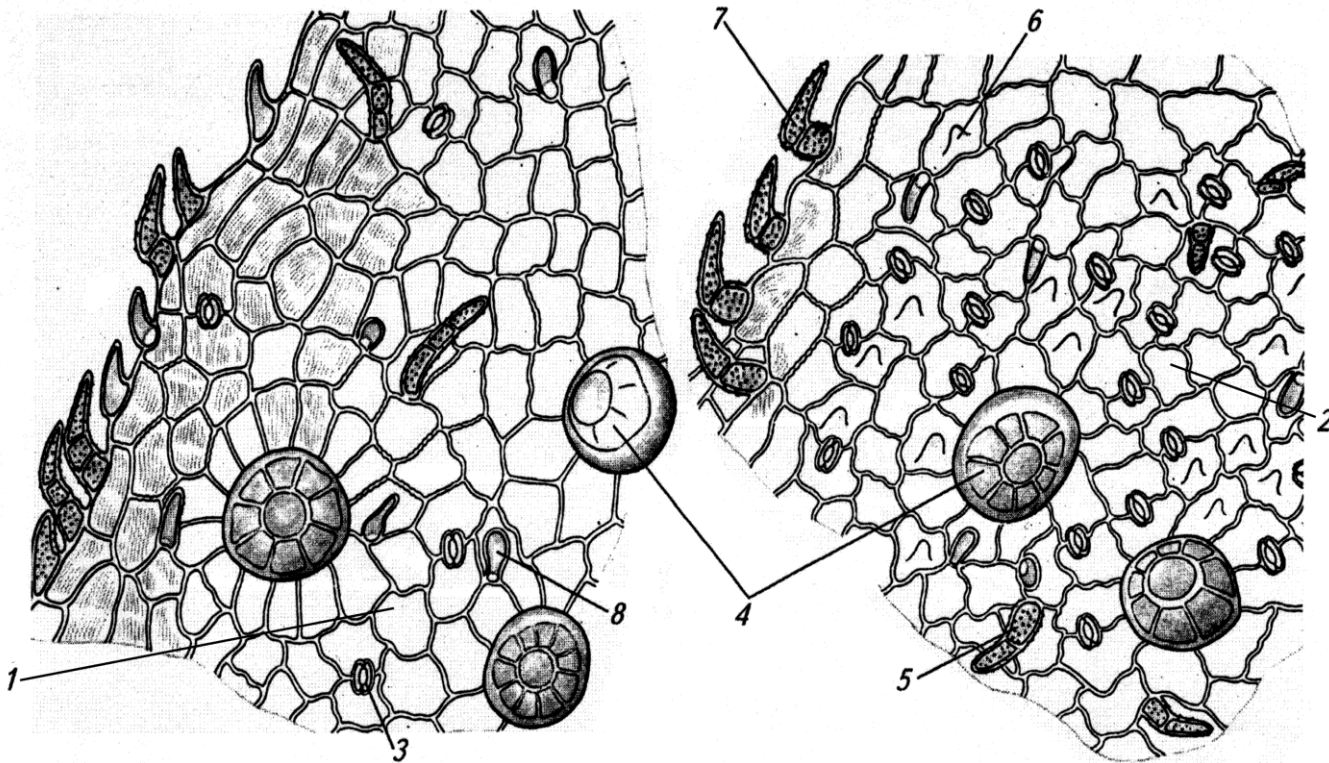
4 – endocarpium;

5 – endospermal cells with fatty oil and calcium oxalate druses.

Thyme herb - *Thymi vulgaris* Herba

Thyme, Garden Thyme - *Thymus vulgaris*

Fam. *Lamiaceae*



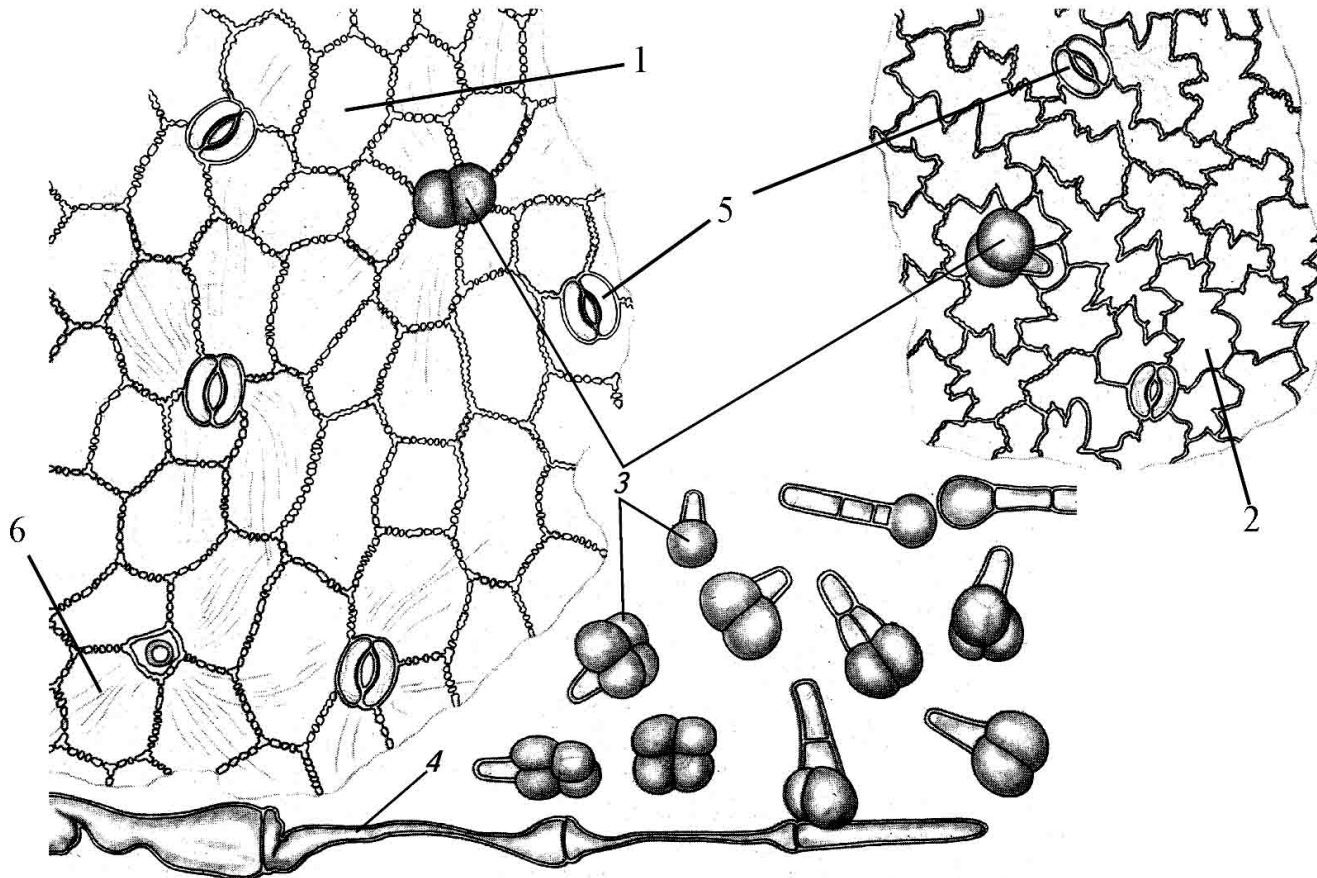
Macroscopical description:

- 1 – upper epiderm;
- 2 – lower epiderm;
- 3 – stomata;
- 4 – essential oil glands;
- 5 – simple hairs with warty surface;
- 6 – papillose trichome;
- 7 – simple hair on the leaf margin

Digitalis lanata leaf – *Digitalis lanatae Folium*

Woolly Foxglove, Grecian Foxglove - *Digitalis lanata*

Fam. *Scrophulariaceae*



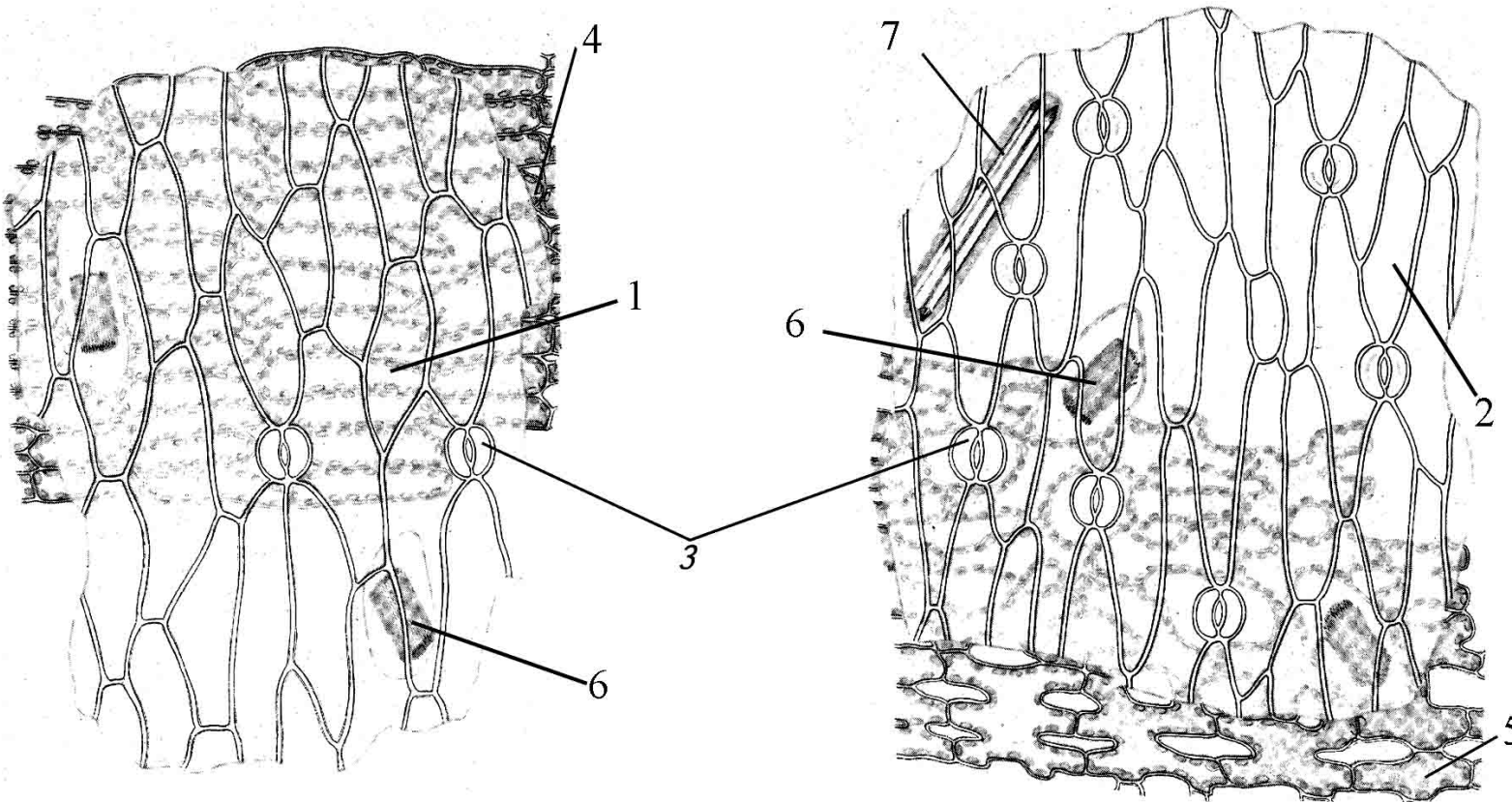
Macroscopical description:

- 1 – upper epiderm;
- 2 – lower epiderm;
- 3 – glandular hairs;
- 4 – simple hair;
- 5 – stomata;
- 6 – rosette with folded cuticle

Convallaria (The lily-of-the-valley) leaf – *Convallariae Folium*

Lily-of-the-valley (Convallaria) - *Convallaria majalis*

Fam. *Liliaceae*



Macroscopical description:

1 – upper epiderm;

2 – lower epiderm;

3 – stomata;

4 – mesophyll cells;

5 – spongeous tissue;

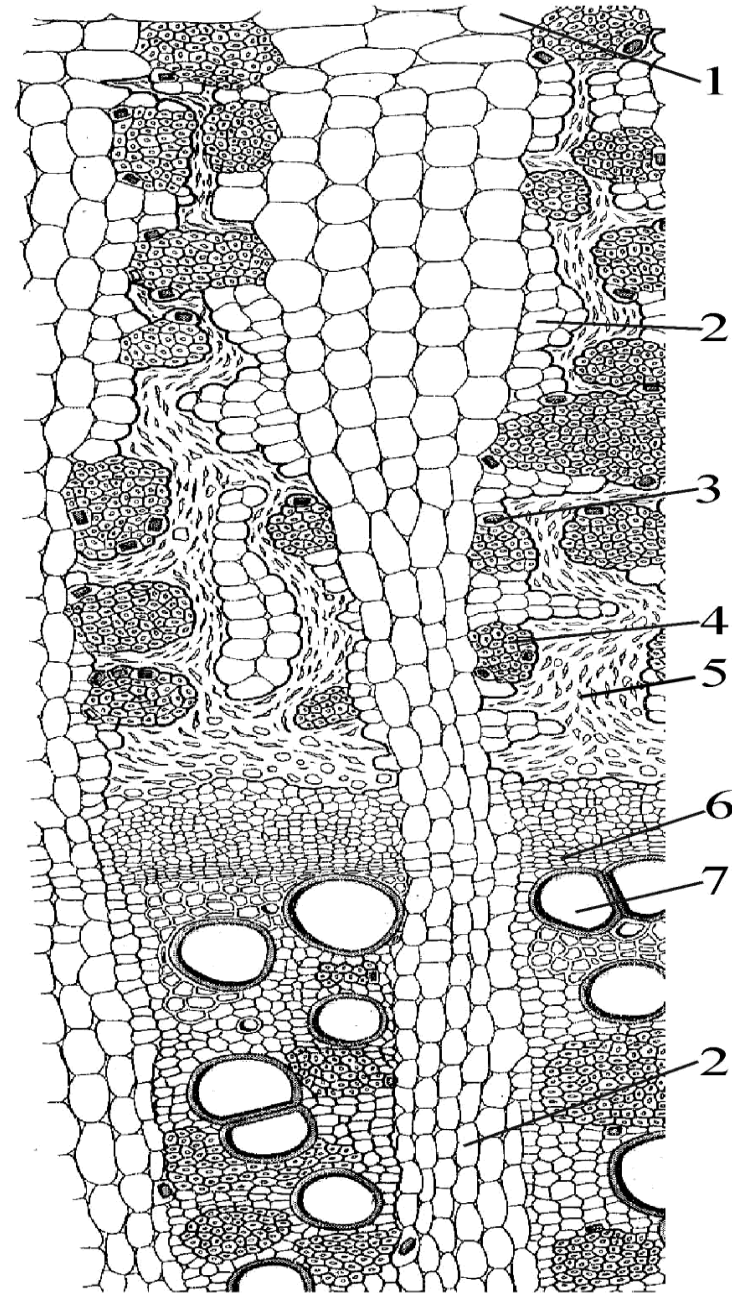
6 – raphides;

7 – stiloids.

Liquorice root - *Glycyrrhizae radix*
Liquorice - *Glycyrrhiza glabra*
Fam. *Fabaceae*

Macroscopical description:

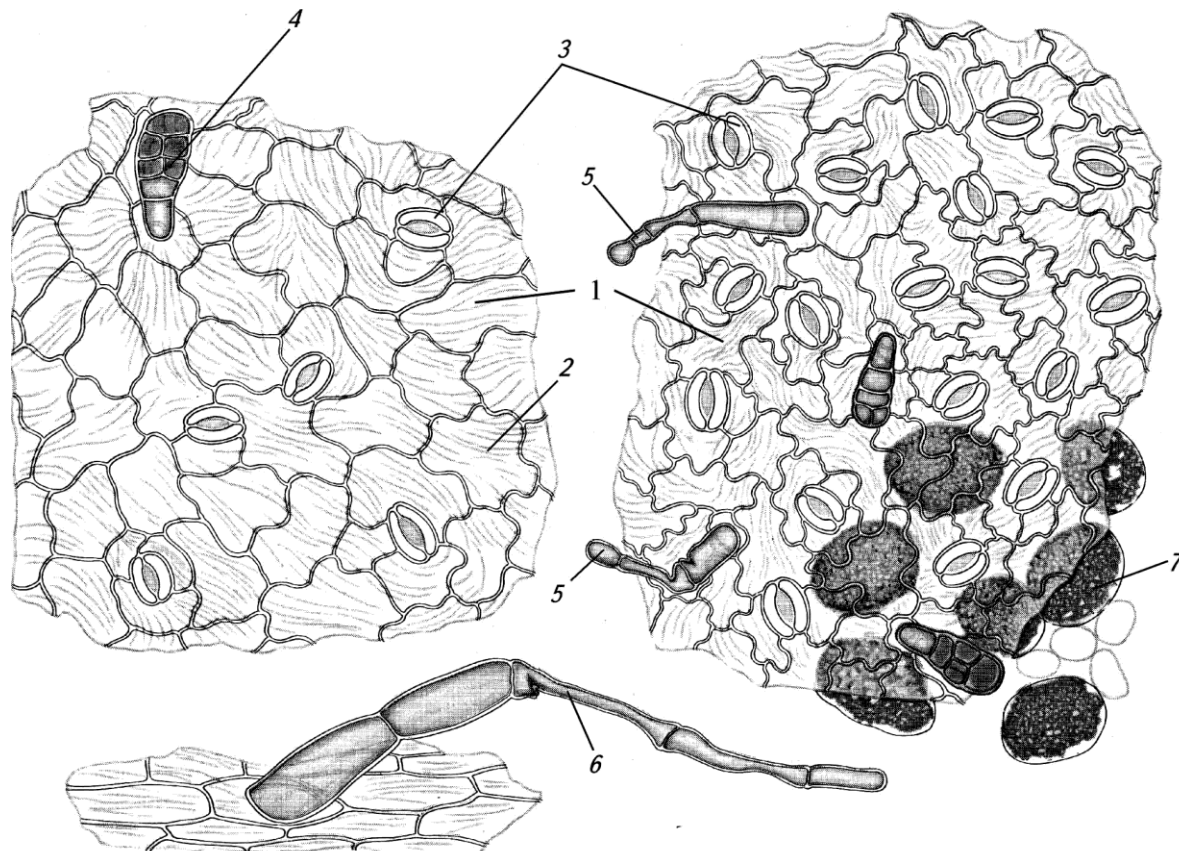
- 1 – multilayer cork;
- 2 – medullar rays;
- 3 – crystals in parenchymal cells;
- 4 – bast fibers;
- 5 – functioning bast;
- 6 – cambium;
- 7 – vessels.



Belladonna leaf - *Belladonnae folium*

Belladonna - *Atropa belladonna*

Fam. *Solanaceae*.



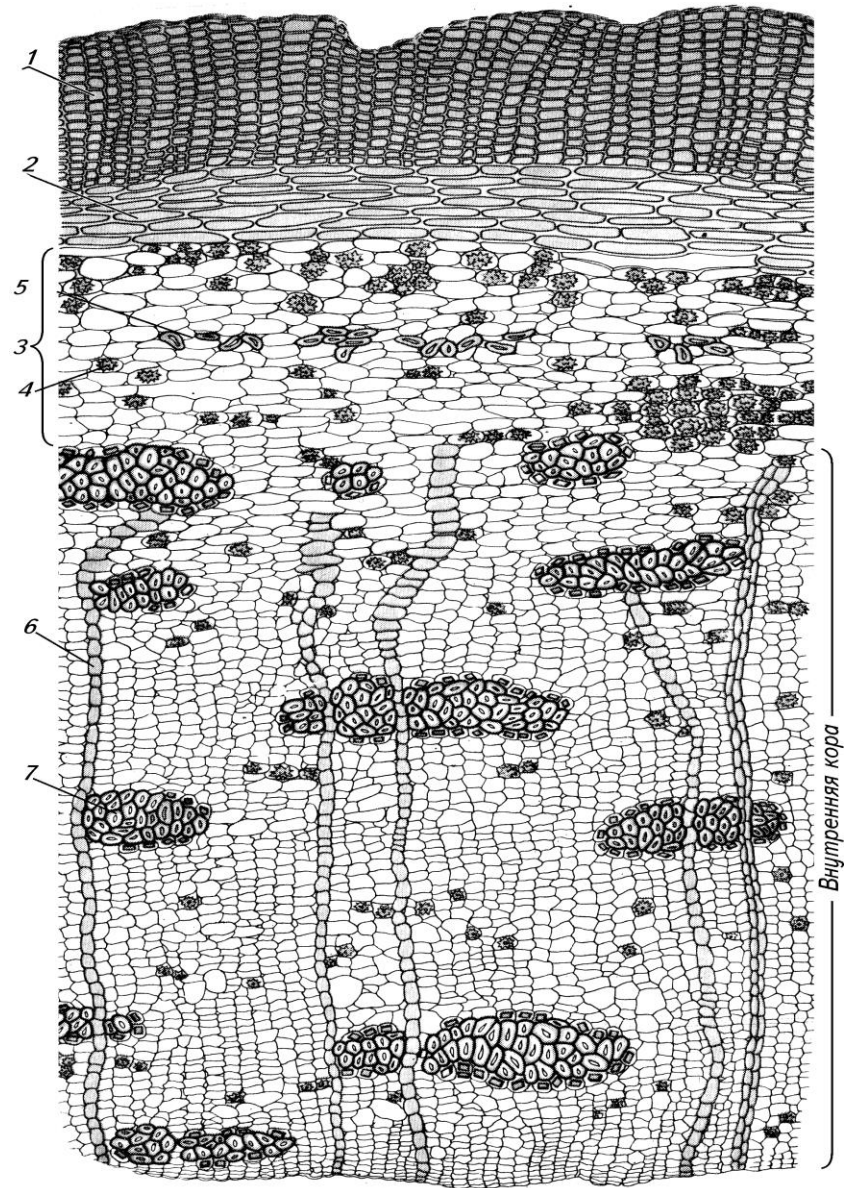
Macroscopical description:

- 1 – upper epidermal cells;
- 2 – lower epidermal cells;
- 3 – stomata;
- 4 – glandular hairs with small pedicel and a large multicellular head;
- 5 – glandular hairs with long pedicel and unicellular head;
- 6 – simple hairs;
- 7 – oval idioblasts filled with calcium oxalate sand.

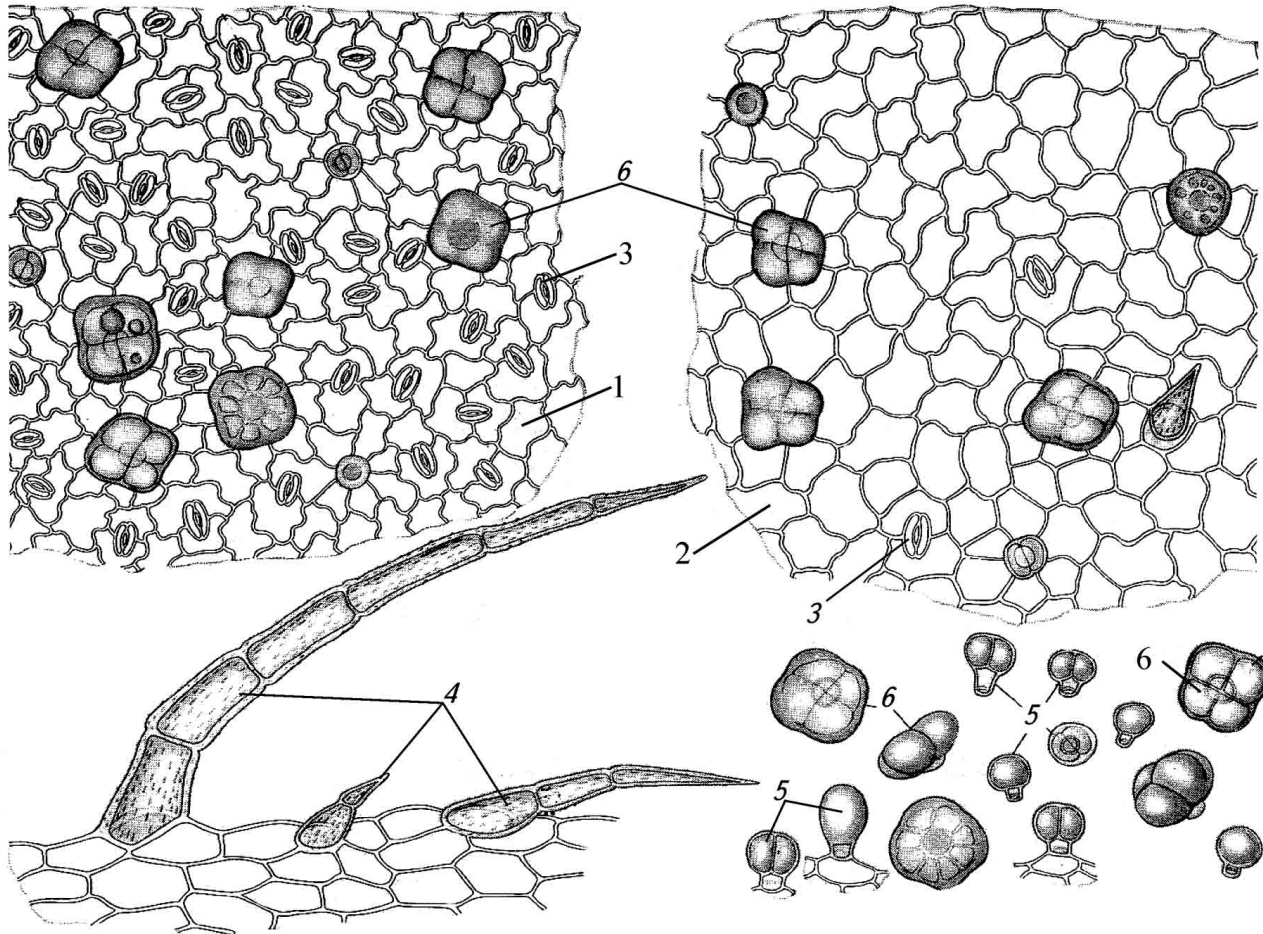
Frangula or Buckthorn Bark – *Cortex Frangulae*
Buckthorn – *Frangula alnus (Rhamnus frangula)*
Fam. - *Rhamnaceae*

Macroscopical description:

- 1 – cork layer;
- 2 – collenchyma;
- 3 – parenchymal cells of outer bark;
- 4 – druses;
- 5 – mechanical fibres;
- 6 – medullar rays;
- 7 – groups of bast fibers surrounded by crystals.



Orthosiphon leaf - *Orthosiphonis Foium*
Java tea, Orthosiphon - *Orthosiphon stamineus*
Fam. *Lamiaceae*.



Macroscopical
description:

- 1 – lower epiderm;
- 2 – upper epiderm;
- 3 – stomata;
- 4 – simple hairs;
- 5 – glandular hairs;
- 6 – essential oil glands.